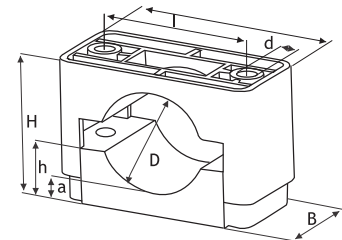


● ST SERIE

Features

- Strength plastic pipe clip 15000 N to 60000
- At medium and high voltage monopolar or tripolar cables, low, composed of two parts amovíveis.
- A bottom is fixed to the structure or surface, and subsequently put the cables to be fixed on this , then closed with the top



D	L	B	Dimensions				Weight		Reference
			l	d	H	h	a	grs	
18-26	77	45	49	10	36-44	13	6	90	ST 18-26
26-38	92	60	60	12	48-60	21	10	165	ST 26-38
36-52	107	60	75	12	58-74	26	11	220	ST 36-52
50-75	128	60	95	12	76-101	35	14	300	ST 50-75
75-100	172	80	127	14	110-135	51	19	770	ST 75-100
100-130	202	80	158	14	141-170	65	20	765	ST 100-130

● SUPPORT FOR FIXING THE FACADE

Features

- Application: Fixing cables facades
- Installation: No use of plug and screw, is fast deinstalação hole 7mm in diameter
- Usage: plastic clamp with serrated larguramáxima of 9mm, resistant to UV
- Rays Material: Nylon resistant to the rays UV
- Color: Black
- Pack of 250 units



Reference

SFP
Nylofix

● BASE AUTO-TAPPING

Features

- Application: Fixing cables facades
- Installation: With the use of threaded steel nail
- Usage: plastic clamp with serrated maximum width of 9mm, UV-resistant
- Material: Nylon resistant to UV rays
- Color: Black



Reference

SAR-M6